



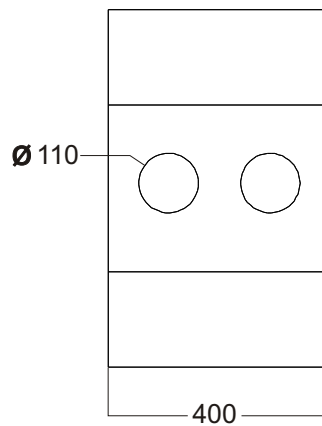
Description

The KS210 is a small band pass subwoofer, housed with two long excursion 10" drivers. It has been designed to be used with K6 or similar loudspeakers. As an option, it can incorporate a passive crossover, allowing it to power one sub KS210 together with two K6's with only one stereo amplifier. The construction is birch plywood painted in texture black finish.

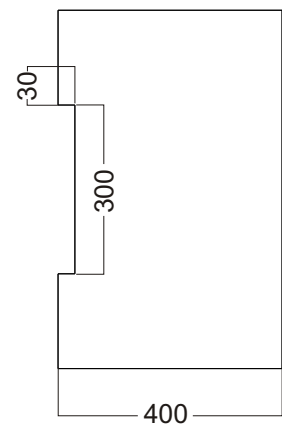
Applications

The KS210 can be used as a subwoofer in installations such as: Bars, restaurants, pubs, commercial centers,...

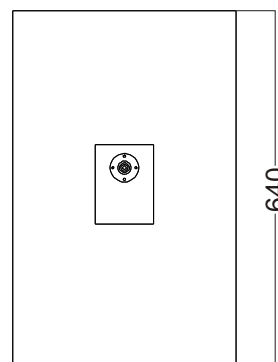
FRONT



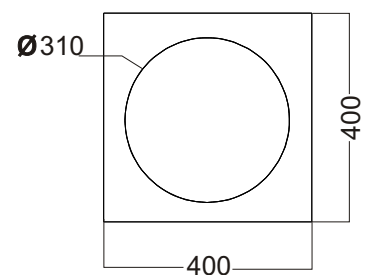
RIGHT



BACK



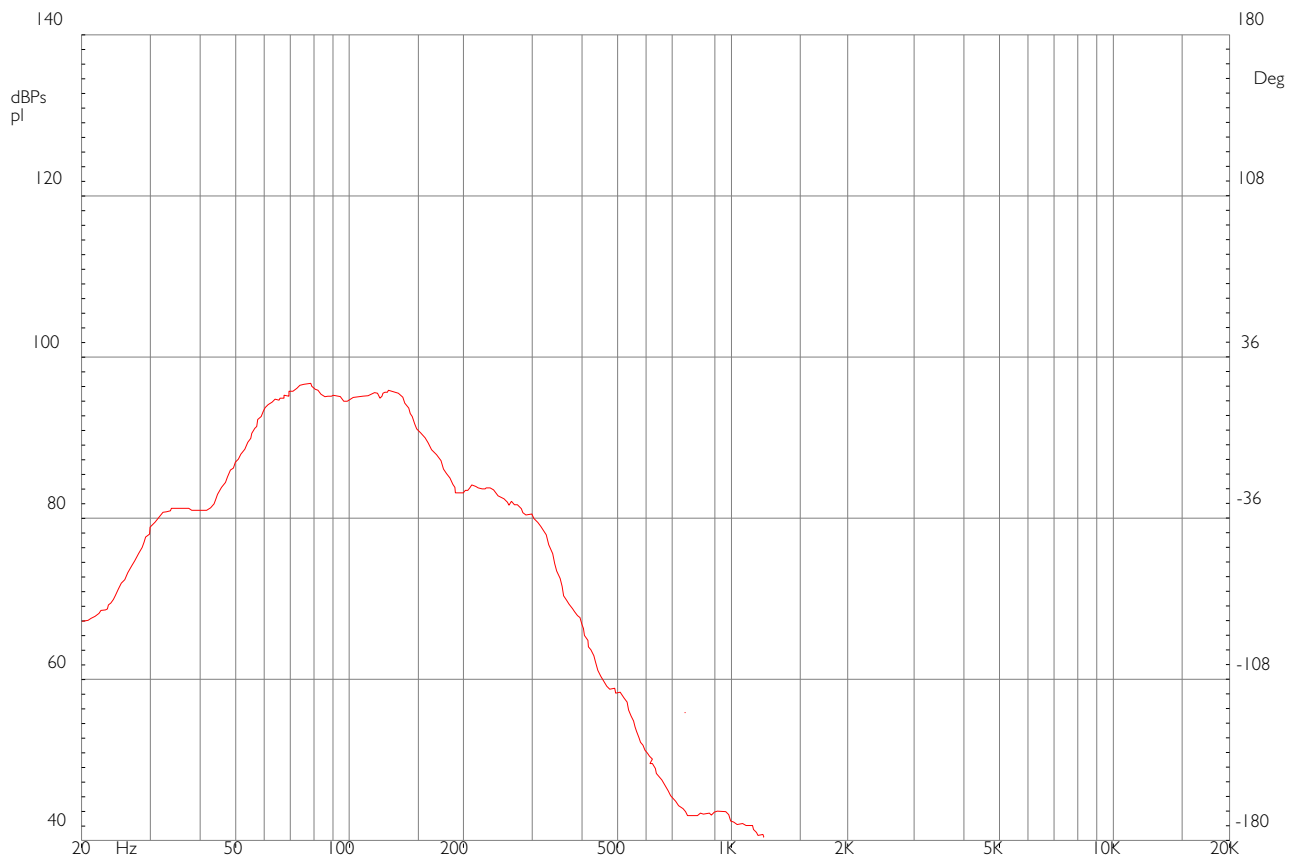
TOP



TECHNICAL SPECIFICATIONS

Frequency Response (Hz)	55 Hz-150 Hz \pm 3dB
Power Handling (Watts)	400 W RMS
Sensitivity	96 dB (1w/1m)
Nominal peak	122 dB
Coverage angle	N/A
Crossover	up to 150 Hz
Impedance	8 X 8Ohm
Drivers	2x10"
Connectors	2X4 pin spk
Dimensions	64x40x40 cm(H x W x D)
Weight	26 Kg

DIAGRAMS



tecnaRE
SOUND SYSTEMS

Is a™ Designed and
manufactured in Spain by



exclusivas electroacústicas s.a.

Pº Ind. Monte Boyal. C/Encinar 282
45950 Casarrubios del Monte (Toledo). SPAIN.
Phone: +34 918 170 110
Fax: +34 918 183 053
www.tecnare.com
exel@tecnare.com